



Complete Agenda

Chief Executive's Department
Swyddfa'r Cyngor
CAERNARFON
Gwynedd
LL55 1SH

Meeting

EXTRAORDINARY MEETING OF THE COUNCIL

Date and Time

10.00 am, FRIDAY, 18TH MARCH, 2016

*** NOTE ***

This meeting will be webcast

<http://www.gwynedd.public-i.tv/core/portal/home>

Location

Siambwr Dafydd Orwig, Council Offices, Caernarfon, Gwynedd, LL55 1SH

Contact Point

Eirian Roberts

01286 679018

maireirianroberts@gwynedd.gov.uk

(DISTRIBUTED 10/03/16)

**Dilwyn Williams
Chief Executive**

www.gwynedd.llyw.cymru

THURSDAY, 10 MARCH 2016

Dear Councillor,

MEETING OF GWYNEDD COUNCIL – FRIDAY, 18 MARCH 2016

YOU ARE HEREBY SUMMONED to attend a meeting of **GWYNEDD COUNCIL** which will be held at **10.00 am** on **FRIDAY, 18TH MARCH, 2016** in **SIAMBR DAFYDD ORWIG, COUNCIL OFFICES, CAERNARFON, GWYNEDD, LL55 1SH, COUNCIL OFFICES, CAERNARFON** to consider the matters mentioned in the following agenda.

Yours faithfully,

A handwritten signature in blue ink, appearing to read "Delys Iwan". The signature is written in a cursive style with a large initial 'D'.

Chief Executive

AGENDA

1. APOLOGIES

To receive any apologies for absence

2. DECLARATION OF PERSONAL INTEREST

To receive any declaration of personal interest.

3. THE CHAIRMAN'S ANNOUNCEMENTS

To receive any Chairman's announcements.

4. CORRESPONDENCE, COMMUNICATIONS OR OTHER BUSINESS

To receive any correspondence, communications or other business brought forward at the request of the Chairman.

5. URGENT ITEMS

To note any items which are urgent business in the opinion of the Chairman so they may be considered.

6. QUESTION

To consider a question which notice has been given.

7. JOINT LOCAL DEVELOPMENT PLAN

In accordance with section 4.12.1 (d) of the Constitution a letter was received from Cllr. Aled Evans which was signed by nine other councillors asking for a meeting of the Council to discuss "aspects of the LDP (Gwynedd and Anglesey), that is, the method used to evaluate the impact of this proposed plan on the Welsh language. We feel that what has been done is unacceptable regarding protecting the Welsh language, and we would like to consider further steps to reverse this weakness."

(A) JOINT LOCAL DEVELOPMENT PLAN AND THE WELSH LANGUAGE 1 - 14

To submit the report of the Cabinet Member for Planning.

(B) INFORMATION SUBMITTED BY COUNCILLOR ALED EVANS To Follow

MEETING	Full Council
DATE	18 March 2016
TITLE	Joint Local Development Plan and the Welsh language
PURPOSE	To remind the Council of how the development of the Joint Local Development Plan has taken into account the interests of the Welsh language.
RECOMMENDATION	For information
AUTHOR	Nia Haf Davies, Planning Manager (Policy)
CABINET MEMBER	Cllr. Dafydd Meurig

Background

1. In accordance with section 4.12.1 (d) of the Constitution a letter was received from Cllr. Aled Evans which was signed by nine other councillors asking for a meeting of the Council to discuss "aspects of the LDP (Gwynedd and Anglesey), that is, the method used to evaluate the impact of this proposed plan on the Welsh language. We feel that what has been done is unacceptable regarding protecting the Welsh language, and we would like to consider further steps to reverse this weakness."

Context for making decisions about the Joint Local Development Plan

2. The responsibilities of Gwynedd Council and Anglesey County Council and the Joint Planning Policy Committee were noted in the agreement which was signed by the two Councils individually in October 2010.
3. Under the agreement, the role of the individual Councils is to approve the Delivery Agreement and to adopt the Plan. Under the agreement, the role of the Joint Planning Policy Committee is to advise on the DA, advise on the Preferred Strategy document, agree on the Deposit Plan, agree on the focussed changes, and finally accept the Inspector's report before its submission to each of the Councils for approval. See

paragraph 30 below for information about the Joint Planning Policy Committee's decision about the Deposit Plan.

4. These responsibilities have been repeated in the original Delivery Agreement (DA) that was approved by each of the two Councils by October 2011. The DA has been supported by the Welsh Government. Therefore, there is an agreement between the two Councils and the Welsh Government on how and when the plan is prepared. Members are reminded of the Council's decision to accept an amendment to the timetable to be included in the Delivery Agreement during its meeting on the 3 March 2016.

The legislative and national planning policy context - preparing joint local development plans and assessing the impact on the Welsh language

5. Each LPA must prepare Local Development Plan (LDP) for its area.
6. The LDP should be prepared in accordance with the Planning Act (Wales) 2015, Planning and Compulsory Purchase Act 2004, **Town and Country Planning (Local Development Plan) (Wales) 2005 Regulations**, PPW, especially Chapter 2 on development plans and the Local Development Plan Manual (2015).
7. The LDP should focus on local issues and objectives that are identified in local strategies and evidence base.
8. It is a requirement under Section 62 of the Planning and Compulsory Purchase Act 2004 that Councils carry out a **Sustainability Assessment** of the LDP and prepare a report on the findings of that assessment. The purpose of the Sustainability Assessment is to assess the social, economic and environmental strategy and policies contained in the LDP, from the outset of the process.
9. It is a requirement under Section 62 of the Planning and Compulsory Purchase Act 2004 that the Sustainability Assessment includes an assessment of the likely effects of the plan on the use of Welsh in the area.

An overview of the processes

10. The flowchart in Appendix I to this report gives an overview of the process of preparing local development plans and the sustainability assessment, stating how and when the Council could incorporate a consideration of the Welsh language in formulating the Plan. This indicates where the consideration of the effects on the Welsh corresponds to the wider process of drawing up the Plan.

The evidence

11. There are many useful sources of data and information on the use of Welsh. They include:
 - i. Census data
 - ii. Local strategies and initiatives
 - iii. Education provision
 - iv. Community facilities
 - v. Language Use Survey
 - vi. Anglesey and Gwynedd Housing and Language Survey, including Snowdonia National Park area

12. The Library of the Joint Local Development Plan includes the following documents that give an overview of information about the Welsh language in the Plan area. There are various other Topic and Background Papers in the Library concerning the infrastructure which is important to maintain and strengthen local communities - the local ingredients:
 - i. Topic Paper 10 Welsh Language and culture (2013)
<https://www.gwynedd.llyw.cymru/en/Council/Documents---Council/Strategies-and-policies/Environment-and-planning/Planning-policy/Supporting-documents/Supporting-documents-2015/Welsh-Language-and-Culture.pdf>
 - ii. Topic Paper 10A Gwynedd Language Profile (2014)
<https://www.gwynedd.llyw.cymru/en/Council/Documents---Council/Strategies-and-policies/Environment-and-planning/Planning-policy/Supporting-documents/Supporting-documents-2015/Language-Profile-Gwynedd.pdf>
 - iii. Topic Paper 10B Anglesey Language Profile (2014)
<https://www.gwynedd.llyw.cymru/en/Council/Documents---Council/Strategies-and-policies/Environment-and-planning/Planning-policy/Supporting-documents/Supporting-documents-2015/A-statistical-picture-of-the-position-of-the-Welsh-language-on-the-Isle-of-Anglesey.pdf>
 - iv. Housing and Language Survey (2014)
<https://www.gwynedd.llyw.cymru/en/Council/Documents---Council/Strategies-and-policies/Environment-and-planning/Planning-policy/Supporting-documents/Supporting-documents-2015/Gwynedd-and-Anglesey-Housing-and-the-Welsh-Language-Survey---FULL-REPORT-FINAL.pdf>

Public participation and consultation (including input from Councillors) and decision-making

13. The Joint Planning Policy Unit has engaged with Councillors from both Councils several times during the Plan preparation process. The following paragraphs provide an overview of when and how input was received from Councillors and the public since 2011.

Preparation of the Public Participation Plan, that is the second part of the DA

14. Public consultation: 14 April 2011 – 2 June 2011;
15. Anglesey County Council and Gwynedd Council approved the DA on 13 September and 20 October 2011, respectively.

Reviewing the evidence base and deciding on the vision, objectives and strategy

16. Public participation phase: 8 November 2011 – 31 January 2012;
17. Seminars for every Councillor: 25 November 2011 (Anglesey); 5 December 2011 (Gwynedd); 7 December 2011 (Gwynedd);
18. Meetings of various groups including: Key Stakeholders Group; Llais Ni; Housing Group; Older People Groups; Children and Young People Group; Disability groups.
19. Joint LDP Panel, Joint Planning Policy Committee, Gwynedd Council Board, Anglesey Board of Commissioners in order to obtain a decision about the strategic direction.

Developing the Preferred Strategy document

20. Seminars for all Councillors on various topics: October 2012, December 2012, January 2013;
21. Joint LDP Panel, Joint Planning Policy Committee, Gwynedd Council Cabinet, Anglesey County Council's Executive Committee, with the latter two making a decision on the content of the preferred strategy, with the latter two deciding on the Preferred Strategy.

Preparing the Deposit Plan

22. Language Committee: October 2013 - Information on the linguistic impact assessment methodology;
23. The Language Committee decided to set up a Task and Finish Group - Planning and the Welsh language, whose membership would include a cross-section of Members. The purpose of the Group was to provide input on behalf of Gwynedd Council, to ensure that the Council's strategic objectives relating to the Welsh language would be fed into the process of preparing planning policies for the Joint Local development Plan. It met in November 2013, January 2014 - discussion about the linguistic impact methodology, the evidence base, developing settlement profiles to assess the impact. No suggestions were made to amend the methodology or suggestions about any additional sources of evidence;
24. The Joint Planning Policy Unit's Manager presented information to a meeting of Arfon Area Language Groups: February 2014;

25. Seminar for all Councillors from both Councils on housing issues: May 2014;
26. Seminar for all Councillors and representatives of Community Councils on various issues: October 2014, November 2014;
27. Joint LDP Panel: monthly between July 2013 - November 2014 – considered the comments submitted about the Preferred Strategy as well as analysis of evidence;
28. Gwynedd Cabinet and Anglesey's Executive Committee accepted a report about the Deposit Plan and supported it: December 2014;
29. Joint Planning Policy Committee decides on the content of the Deposit Plan in December 2014, and therefore its soundness having considered the representations and the evidence, and approved it for public consultation.

Sustainability Assessment (including Sustainability Environmental Assessment)

30. The Sustainability Assessment process, which includes the SEA, is a statutory requirement and is an iterative process from the outset. A recognised methodology which is applied country wide was used to proceed through the Sustainability Assessment process. After considering various plans and programmes and the extensive evidence base, a Scoping Report was published for public consultation in July 2011. Following the public consultation a Sustainability Framework was prepared which included a series of objectives, questions and indicators. A copy of the Sustainability Assessment Framework is available in Annex 2. In accordance with legislation and policy and national planning guidelines, the Sustainability Framework incorporates a consideration of the Welsh language in terms of its relevance to land use. The Sustainability Framework has been used to assess the strategic options, sites and policies of the Plan throughout the process. The Language Impact Assessment has assisted the Sustainability Assessment process to come to a conclusion about how the strategy and policies are likely to affect the use of Welsh, and the sustainability of communities.
31. The Sustainability Assessment Report of the Preferred Strategy and the Sustainability Assessment Report of the Deposit Plan were both published for public consultation at the same time as the Preferred Strategy document and the Deposit Plan in May 2013 and February 2015, respectively.
<https://www.gwynedd.llyw.cymru/en/Council/Strategies-and-policies/Environment-and-planning/Planning-policy/Joint-Local-Development-Plan/Appraisals-and-Assessments.aspx> A Final report on the Sustainability Assessment will form part of the Examination Library.

Language Impact Assessment

32. The Language Impact Assessment of the Plan is an iterative process, which takes account of Welsh and its use in terms of the relevance to land use from the outset. Therefore, in order to have a basis for the Sustainability Assessment, the Language Impact Assessment includes an assessment of the evidence on the effects of the strategy, policies and spatial designations on the Welsh language and its use, and the sustainability of communities. It helps Councils assess how the Plan will address its vision and objectives.
33. Before starting the Language Impact Assessment process, the views of the Language Units of both Councils were sought. There was agreement about using the recognised methodology to carry out the process, which is a methodology that aligns with guidance developed by a consortium of planning authorities and other partners that included the Language Board (“Planning and the Welsh Language: The Way Ahead”) and technical planning guidance issued by the Welsh Government. The same methodology is applied by other authorities at the plan preparation stage and to consider relevant planning applications.
34. The process starts by collecting, recording and analysing information in order to gain an understanding of the social and economic characteristics of the Plan area. The information is recorded in a series of Topic and Background Papers, which is in the Examination Library.
35. The Language Impact Assessment like the Sustainability Appraisal then looks at communities in a holistic way, giving due regard to language as an element which is an integral part of community life and activities within it. This can be considered as an extension of a sustainable methodology in which a number of economic, social and environmental factors influence each other and where change in one domain influences another. Where appropriate, it identifies/ supports mitigation and positive interventions that will be a means of helping communities thrive.
36. A Report on the Welsh Language Impact Assessment was published, which included a description of the methodology and conclusions of the Assessment and the development of the Preferred Strategy as a background document at the same time as the public consultation on the Preferred Strategy document in May 2013. The report can be seen here <https://www.gwynedd.llyw.cymru/en/Council/Documents---Council/Strategies-and-policies/Environment-and-planning/Planning-policy/Appraisals-and-Assessments/Language-Impact-Assessment.pdf>
37. A second edition of the Report on the Language Impact Assessment, which recorded the conclusions about the strategy, policies and proposals of the Deposit Plan, was published as a background document for public consultation at the same time the Deposit Plan was published in February 2015. It identifies mitigation measures and positive interventions. <https://www.gwynedd.llyw.cymru/en/Council/Documents---Council/Strategies-and-policies/Environment-and-planning/Planning-policy/Supporting-documents/Supporting-documents-2015/Language-impact-assessment.pdf> Table 7 in section 5 of Deposit Plan describes the link between the objectives, policies and monitoring indicators. The third edition of the Report on the Language Impact Assessment is part of the Examination Library.

The public consultation on the Deposit Plan: February - March 2015

38. Objections were received during the public consultation period on the Deposit Plan which raised concerns over the impact of facilitating 7,184 housing units in the Plan area during the Plan period (2011-2026). Some of the objectors referred to the conclusions of the Language Impact Assessment. It is emphasised that every objections submitted during the public consultation period have been considered, firstly during Panel meetings during 2015 and then in the Joint Planning Policy Committee on the 29 January 2016.

Joint Planning Policy Committee decision - January 2016

39. The Joint Planning Policy Committee decided that the Plan continues to be 'sound', subject to a number of focussed changes, and should be submitted to the Welsh Government for Public Examination. <https://democracy.cyngor.gwynedd.gov.uk/ieListDocuments.aspx?CId=247&MId=260&Ver=4>
40. The Joint Planning Policy Committee's decision to refer the Plan to the submission stage for Examination has been made and steps are now being taken to implement the decision on behalf of both Councils. This accords with the agreement between Gwynedd and Anglesey and the Joint Planning Policy Committee's delegated powers. On this basis it isn't possible to go back and undo this decision or re-open elements of the Plan. By making this decision the authorities have found that the Plan is sound (just as they did when they approved the Deposit Plan in December 2014). It is emphasised that the Examination will now provide objectors with an opportunity to present their cause.
41. The Focussed Changes referred to above in paragraph 39 includes 11 Focussed Changes that were approved having fully considered the objections referred to in paragraph 38, i.e. the objections about the effect of the Plan on the Welsh language.

Consultation about the Focussed Changes

42. The Schedule of Focussed Changes is subject to public consultation until 13 April 2016. The document can be seen at <https://www.gwynedd.llyw.cymru/en/Council/Strategies-and-policies/Environment-and-planning/Planning-policy/Joint-Local-Development-Plan/Joint-Local-Development-Plan.aspx>
43. Representations in support and objections about the Focussed Changes will be registered and forwarded to the Planning Inspectorate so that the Inspector can consider them. The objectors will have the right to take part in relevant hearings in order to present their case.

The Public Examination

44. An independent Inspector will be appointed by the Planning Inspectorate to conduct the Examination. The appointed Inspector's role is to conduct an independent

assessment of the overall soundness of the plan and that it meets the statutory requirements for its preparation. This means addressing key issues at the heart of the Plan. The opponents who want to see changes to the Plan and who have expressed a wish to be heard by the Inspector will be invited to attend the relevant Public Hearings. Currently it is anticipated that the Public Hearings will take place during September and October 2016. More information about the Public Hearings programme will be released during the Pre-Meeting Hearings.

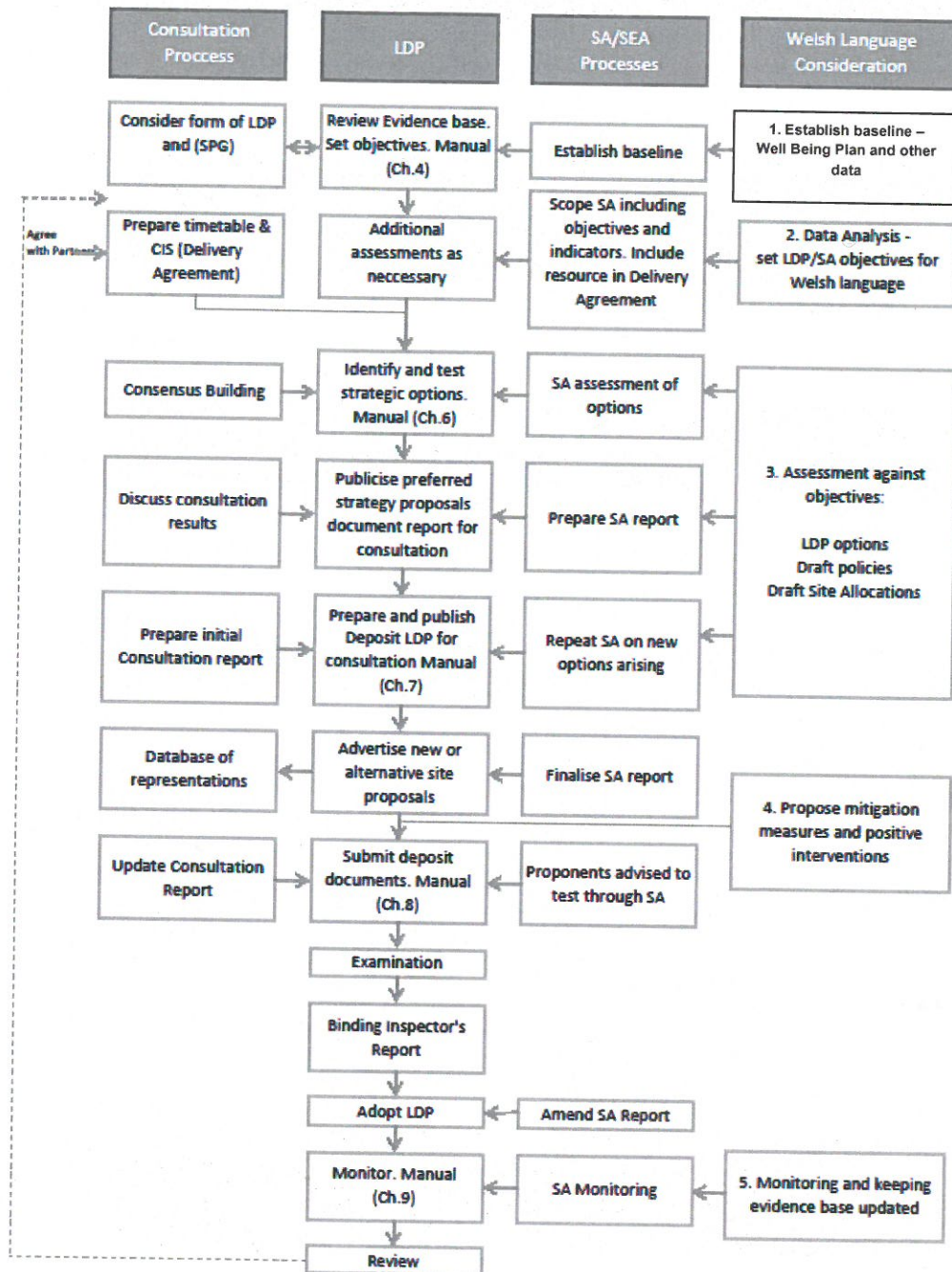
Conclusion

45. That the process has been totally inclusive, with a number of opportunities throughout the process for Councillors and communities to contribute, in accordance with the Delivery Agreement, which was approved by the Councils at the start of the process
46. That the Joint LDP preparation process has met the statutory requirements, including consideration of the Welsh language and its use in terms of relevance to land use.

Appendix 1: Flowchart – Overview of processes to prepare local development plans

Appendix 2: Sustainability Appraisal Framework

Amended – Main stages of the LDP preparation process^{xvi}



The Sustainability Appraisal Framework

Table 2.2: The SA Framework

SA Framework of Objectives
<p>1. Maintain and enhance biodiversity interests and connectivity <i>(SEA Topics: biodiversity, fauna, flora, soil)</i></p>
<p>Will the plan...</p> <ul style="list-style-type: none"> ■ Protect the integrity of designated (international, national and local) sites and avoid habitat/ species fragmentation ■ Conserve and enhance terrestrial and marine wildlife habitats (including the plan areas substantial woodland assets) and wider biodiversity in rural and urban areas ■ Maintain and improve the provision of green infrastructure ■ Conserve and enhance designated geological sites and wider geodiversity ■ Maintain and enhance ecological function and connectivity.
<p>Proposed Indicators:</p> <ul style="list-style-type: none"> ■ Loss of biodiversity through development measured by loss or impact to international sites (i.e. Natura 2000), national sites (e.g. SSSI) and local sites in JLDP area ■ Net loss of biodiversity in LDP area caused by development ■ % of features (various types) in favourable condition, including both land and marine based ■ Achievement of BAP objectives and targets (UK and country specific /regional /local) ■ Trends and status of NERC 2006, Section 42 species/habitats ■ Number and area of SINCs and LNR within the plan.
<p>2. Promote community viability, cohesion, health and well being <i>(SEA Topics: human health, population)</i></p>
<p>Will the plan ...</p> <ul style="list-style-type: none"> ■ Meet the needs of an ageing population ■ Reduce out migration of working age people in support of age balanced communities ■ Improve the provision of, and access to, facilities and services for disadvantaged communities and rural areas ■ Promote community interaction and social inclusion ■ Remove barriers and create opportunities for people to live healthier lifestyles, e.g. promoting exercise (walking, cycling) ■ Reduce health inequalities between areas and social groups
<p>Proposed Indicators:</p> <ul style="list-style-type: none"> ■ % of total population with access to key services ■ lifestyle related health measures (e.g. overweight/ obese) – Welsh Health Survey

SA Framework of Objectives
3. Manage and reduce the impacts of climate change by promoting and supporting mitigation and adaptation measures <i>(SEA Topics: climatic factors, air)</i>
<p>Will the plan ...</p> <ul style="list-style-type: none"> ■ Reduce the emission of greenhouse gases from transport, buildings and energy generation ■ Support and encourage new developments that are energy efficient and climate change resilient ■ Integrate and promote renewable energy and low carbon energy schemes, including on a local, community level, and increase the proportion of energy demand met by low carbon sources ■ Ensure adaptation planning that maximises the opportunities and minimises the cost of climate change
<p>Proposed Indicators:</p> <ul style="list-style-type: none"> ■ % change in carbon dioxide emissions from industry /commercial, domestic, road transport, land use change and forestry sectors
4. Conserve, promote and enhance the Welsh language <i>(SEA Topic: cultural heritage)</i>
<p>Will the plan...</p> <ul style="list-style-type: none"> ■ Protect and enhance opportunities for the promotion and development of the Welsh Language
<p>Proposed Indicators:</p> <ul style="list-style-type: none"> ■ Number/ % Welsh Language speakers
5. Conserve, promote and enhance cultural resources and historic heritage assets <i>(SEA Topic: cultural heritage)</i>
<p>Will the plan ...</p> <ul style="list-style-type: none"> ■ Ensure that local historic, archaeological and cultural assets are protected (including from new developments) and enhanced for the benefit of residents and visitors ■ Promote access to the historic environment for education and tourism/ economic development
<p>Proposed Indicators:</p> <ul style="list-style-type: none"> ■ Number of historic assets at risk / change in number at risk
6. Support economic growth and facilitate a vibrant, diversified economy providing local employment opportunities <i>(SEA Topic: Population)</i>
<p>Will the plan ...</p> <ul style="list-style-type: none"> ■ Promote and facilitate investment for local businesses across a variety of

SA Framework of Objectives
<p>economic sectors</p> <ul style="list-style-type: none"> ■ Improve and enhance employment opportunities, including in rural areas ■ Support the tourist industry through environmental improvements and enhanced infrastructure and facilitating improvements to existing facilities and infrastructure ■ Provide access to training, education and skills development opportunities for all sectors of the community.
<p>Proposed Indicators:</p> <ul style="list-style-type: none"> ■ Economic activity by sector ■ Employment status of residents 16 years+ ■ Number of people commuting into and out of authority areas
<p>7. Provide good quality housing, including affordable housing that meets local needs (SEA Topic: population, human health)</p>
<p>Will the plan ...</p> <ul style="list-style-type: none"> ■ Improve the quality and availability of existing housing stock for deprived communities ■ Deliver additional affordable and sustainable housing with minimal impact on the environment in rural and urban areas ■ Deliver adaptable housing that addresses the individual needs of communities
<p>Proposed Indicators:</p> <ul style="list-style-type: none"> ■ Number of new affordable housing units provided/ year as percentage of all new units
<p>8. Value, conserve and enhance the plan area's rural landscapes and urban townscapes (SEA Topics: landscape)</p>
<p>Will the plan ...</p> <ul style="list-style-type: none"> ■ Protect and enhance the special landscape qualities of the plan area, including AONBs, coastal/ seascapes and townscapes ■ Protect and improve the quality of publicly accessible open space in rural and built environments ■ Ensure that new developments are appropriately and sensitively integrated with the landscape and townscape character of the plan area
<p>Proposed Indicators:</p> <ul style="list-style-type: none"> ■ Proportion of high/very high quality landscape identified by LANDMAP ■ Number / proportion of new developments within AONB's ■ Number / proportion of new developments within areas classed as outstanding by LANDMAP.
<p>9. Use land and mineral assets efficiently and promote mechanisms for waste minimisation, re-use and recycling</p>

SA Framework of Objectives
(SEA Topic: material assets, soil)
<p>Will the plan ...</p> <ul style="list-style-type: none"> ■ Prioritise development on suitable previously developed/ brownfield land without having an impact on biodiversity, historic heritage assets and landscape ■ Protect soil quality (the best and most versatile land) ■ Promote the regeneration of contaminated land and avoid/reduce soil contamination ■ Reduce waste arisings and support the progression towards a sustainable waste management hierarchy for existing and new developments (including through a sustainable network of management facilities) ■ Will the plan protect soil functions, which includes flood alleviation and carbon sequestration.
<p>Proposed Indicators:</p> <ul style="list-style-type: none"> ■ % proportion of development on previously developed land ■ % municipal wastes sent to landfill ■ % municipal waste reused/ recycled ■ Area of soil permanently 'sealed' and area of carbon rich/organic soils developed
10. Promote and enhance good transport links to support the community and the economy (SEA Topic: population, human health)
<p>Will the plan ...</p> <ul style="list-style-type: none"> ■ Improve accessibility in rural areas, through linking transport networks (public and non-motorised) to service centres ■ Reduce the need to travel by private car, through improved public transport infrastructure ■ Prioritise accessibility by sustainable transport options for new developments
<p>Proposed Indicators:</p> <ul style="list-style-type: none"> ■ Method of travel to work - % working population who travel by car ■ Percentage of new residential development within 30 minutes public transport time of facilities ■ Access to services and facilities by public transport, walking and cycling ■ % increase in the cycle network ■ Proportion of lpg fuel sources for motor vehicles ■ Number of electrical recharge points and hydrogen fuel sources available
11. Safeguard water quality, manage water resources sustainability and minimise flood risk (SEA Topic: water, biodiversity)
<p>Will the plan ...</p>

SA Framework of Objectives

- Ensure that water quality of rivers, lakes, ground water and coastal waters are protected and improved
- Minimise diffuse pollution from rural and urban areas
- Protect and enhance water resources and support the integration of water efficiency measures in all new developments
- Minimise the risk of all types of flooding (tidal, fluvial, surface water and sewerage) to people and property through appropriate planning and sustainable design
- Promote water efficiency and adaptation measures in new developments to address the impacts of climate change, (e.g. SUDs)
- Facilitate development away from land that is at risk from flooding.

Proposed Indicators:

- % [or number of proportion of total of new developments with integrated sustainable drainage systems
- % of waterbodies at good ecological status or potential
- proportion/ absolute number of development in C1 and C2(defined by TAN15)

SA Method

2.9 This SA Framework formed the basis for appraising the strategic options for the level and distribution of growth, reasonable options for sites and policies from 2012 through to 2015. The baseline information and plans and programmes review was updated in 2013 and 2014; the sustainability issues and problems for the Local Plan remained the same and the SA Framework is still considered relevant and is retained for continuity of appraisal. The summary of the updated baseline and plans and programmes review can be found in Section 3 with the detail provided in Appendix 3.

2.10 During the early stages 2011-2013 of SA and Local Plan preparation, the SA used a system of symbols to represent the findings of the SA for different elements of the emerging plan as follows:

For the compatibility analysis of vision and objectives:

Table 2.3: Compatibility Analysis of Vision & Objectives Key (2012)

✓	Objectives Compatible
✗	Objectives Incompatible
+/-	Range of possible positive and negative outcomes
-	No relationship